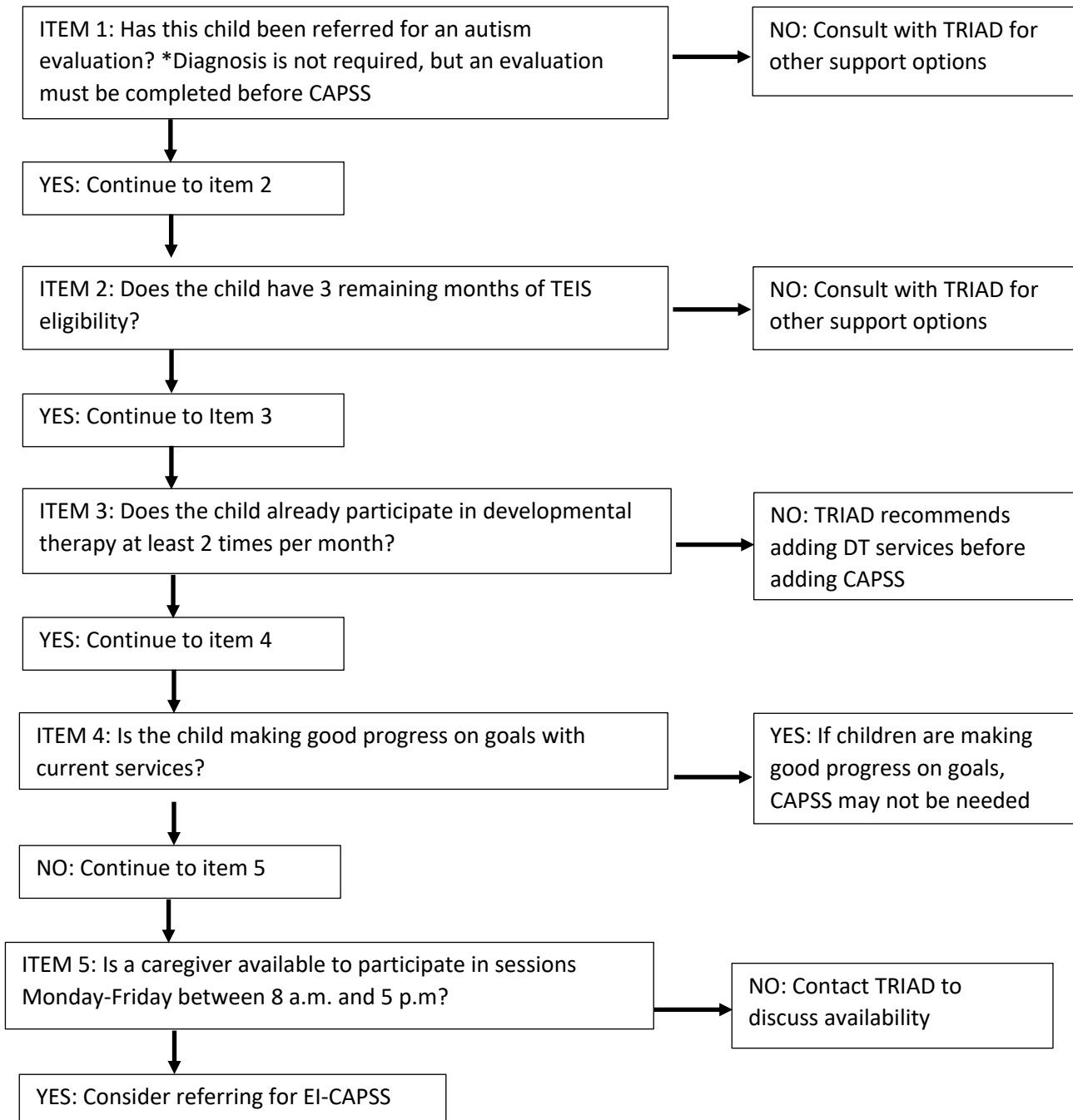


## TRIAD Caregiver and Provider Support Service (CAPSS) Referral Tree

TRIAD's EI CAPSS program is designed to provide support to families *following an evaluation* for autism. These services are designed to provide *caregiver training* to support families in helping their child reach their potential. A caregiver must be available to actively participate in all sessions with the child. This service is brief and collaboration with the *developmental therapist* is key to long-term impact and success.

The tool below is designed to guide IFSP team decision making around making a referral for CAPSS. Ultimately, the decision to refer is the IFSP's team decision but please reach out to TRIAD with any questions or concerns.



For questions, contact Mary Fleck ([mary.a.fleck.1@vumc.org](mailto:mary.a.fleck.1@vumc.org)) or Kathleen Simcoe ([Kathleen.simcoe@vumc.org](mailto:Kathleen.simcoe@vumc.org)),  
Co- Directors of Early Intervention