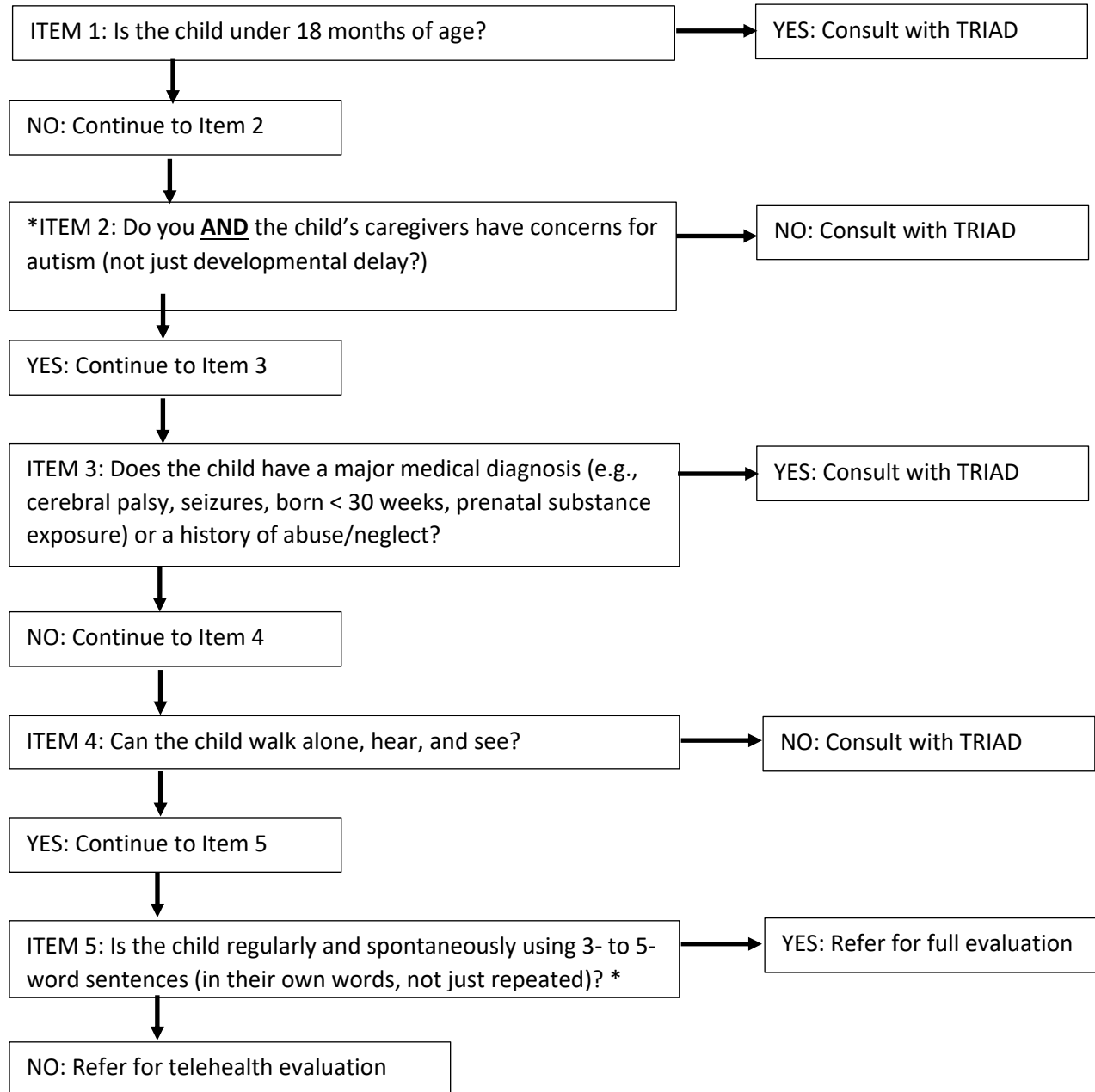


TEIS Telehealth Referral Decision Tree

The TRIAD Telehealth Diagnostic Service is designed to provide a rapid, brief assessment of children between 18 and 36 months where there are explicit early indicators for Autism Spectrum Disorder. The program is designed to help rapidly, accurately identify autism when this is a clear and pressing issue for families. The program is not intended to replace more in-depth assessments for families where there are complex issues that require more substantial evaluation over time.



*Examples of 3- to 5-word sentences: "Baby no eat", "Daddy go outside", "I did it", "my blue dog", "No, don't want it"

Some early indicators of potential Autism Spectrum Disorder

- **Limited nonverbal communication skills.**

Examples:

- Eye gaze is limited/inconsistent
- Gesture use is limited – e.g., not pointing

- **Undirected and/or unusual vocalizations**

Examples:

- child makes more sounds to self than to others
- child frequently repeats/echoes what other people say
- child makes repetitive sounds (e.g., “tikkatikka”, “eee”)

- **Social differences:**

Examples:

- Inconsistent response to name
- More focused on objects/interests than on other people
- Limited awareness of social environment

- **Atypical play:**

Examples:

- Lining up toys, organizing, stacking, dropping objects
- Repeated actions (e.g., flicking light switch, pushing buttons, objects in and out, spinning wheels)
- Sensory seeking: Licking, smelling, rubbing, or looking closely at objects
- Sensory sensitivities: bothered by everyday noises (e.g., such a vacuum cleaner, hair dryer, microwave, people singing), bothered by clothing fabrics
- Limited symbolic and pretend play
- Strong and/or unusual interests

- **Atypical body movements:**

Examples:

- Walking on tiptoes
- Flapping hands
- Tensing/posturing hands/body
- Spinning in circles, pacing