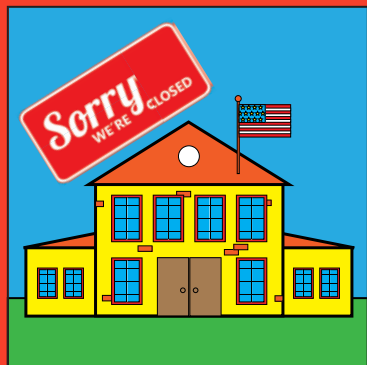
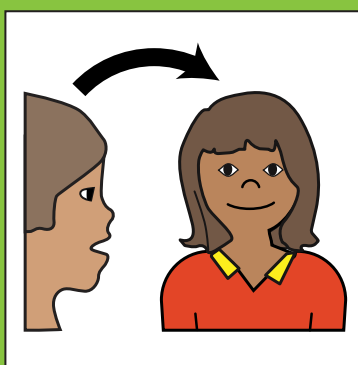


Community Participation is Limited



Many places in the community are closed because of the Coronavirus.



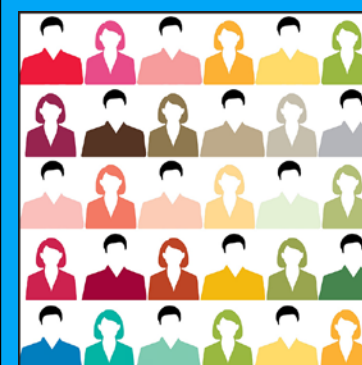
Coronavirus can pass from one person to another.



Coronavirus can pass more often in groups of 10 people or more.



It is best not to be in a group of 10 people or more right now.



There are big groups in the community.



So many places are closed.



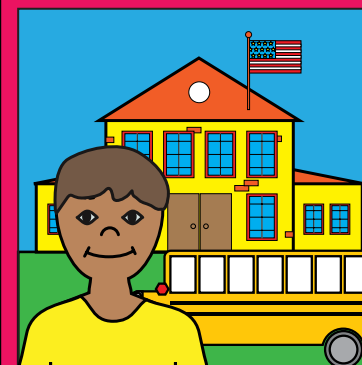
I will stay home for many days.



The people who care about me want me to be safe.



When it is safe, I can be around groups of people again.



When it is safe, many places will be open again.