

Scan me!



Seeking Families to Participate in a Research Study



We're studying family interactions in their every day lives and need your help. Participation includes weeklong recordings and **two visits** to Vanderbilt.

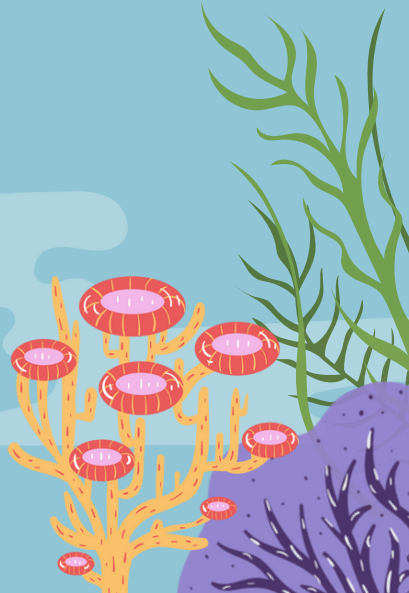
To be eligible, you must have a child that is 12 months or younger

Participating families will receive up to \$415 for full participation

VANDERBILT UNIVERSITY



MEHARRY
VETERINARY CENTER



Scan me!



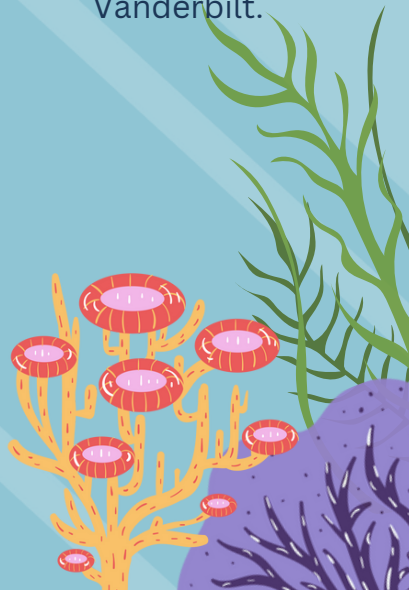
Seeking Families to Participate in a Research Study



We're studying family interactions in their every day lives and need your help. Participation includes weeklong recordings and **two visits** to Vanderbilt.

To be eligible, you must have a child that is 12 months or younger

Participating families will receive up to \$415 for full participation



Scan me!



Seeking Families to Participate in a

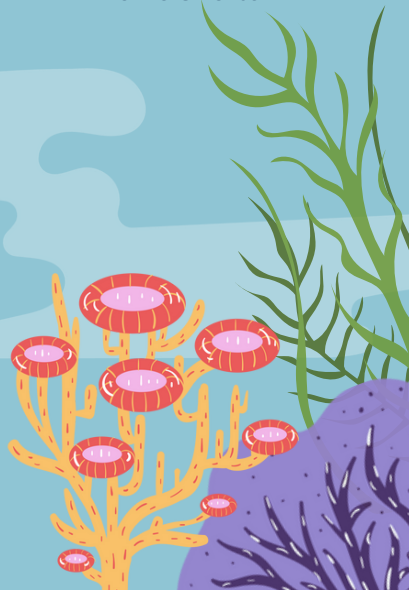
Research Study



We're studying family interactions in their every day lives and need your help. Participation includes weeklong recordings and **two visits** to Vanderbilt.

To be eligible, you must have a child that is 12 months or younger

Participating families will receive up to \$415 for full participation



Scan me!



Seeking Families to Participate in a Research Study



We're studying family interactions in their every day lives and need your help. Participation includes weeklong recordings and **two visits** to Vanderbilt.

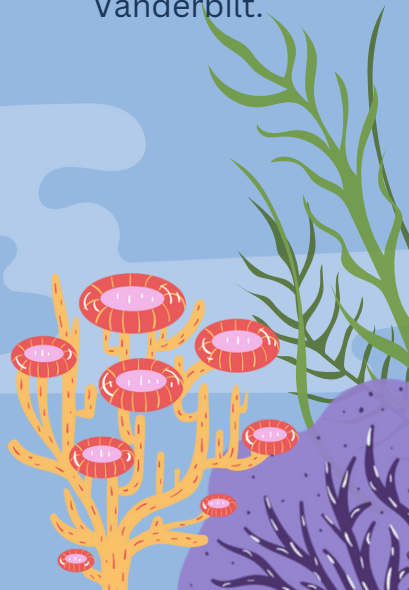
To be eligible, you must have a child that is 12 months or younger

Participating families will receive up to \$415 for full participation

VANDERBILT
UNIVERSITY



MEHARRY
MEDICAL CENTER



Scan me!



Seeking Families to Participate in a Research Study



We're studying family interactions in their every day lives and need your help. Participation includes weeklong recordings and **two visits** to Vanderbilt.

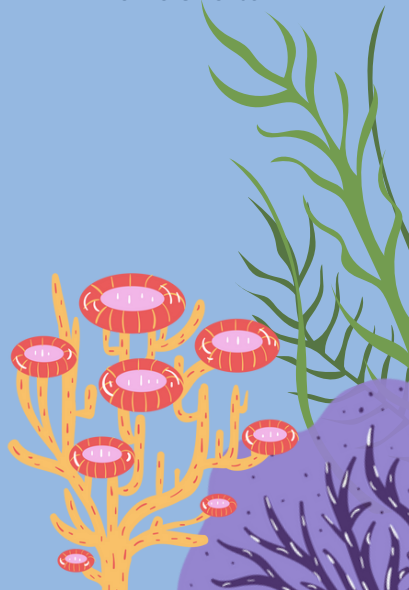
To be eligible, you must have a child that is 12 months or younger

Participating families will receive up to \$415 for full participation

VANDERBILT UNIVERSITY



MEHARRY HOSPITAL



Scan me!



Seeking Families to Participate in a Research Study

We're studying family interactions in their every day lives and need your help. Participation includes weeklong recordings and **two visits** to Vanderbilt.



To be eligible, you must have a child that is 12 months or younger



Participating families will receive up to \$415 for full participation

Scan me!



Seeking Families to Participate in a Research Study

We're studying family interactions in their every day lives and need your help. Participation includes weeklong recordings and **two visits** to Vanderbilt.

To be eligible, you must have a child that is 12 months or younger



Participating families will receive up to \$415 for full participation

Scan me!



Seeking Families to Participate in a Research Study

We're studying family interactions in their every day lives and need your help. Participation includes weeklong recordings and **two visits** to Vanderbilt.



To be eligible, you must have a child that is 12 months or younger



Participating families will receive up to \$415 for full participation

Scan me!



Seeking Families to Participate in a Research Study

We're studying family interactions in their every day lives and need your help. Participation includes weeklong recordings and **two visits** to Vanderbilt.

To be eligible, you must have a child that is 12 months or younger



Participating families will receive up to \$415 for full participation

Scan me!



Seeking Families to Participate in a Research Study



We're studying family interactions in their every day lives and need your help.

Participation includes weeklong recordings and **two visits** to Vanderbilt.

To be eligible, you must have a child that is 12 months or younger

Participating families will receive up to \$415 for full participation



Scan me!



Seeking Families to Participate in a Research Study



We're studying family interactions in their every day lives and need your help. Participation includes weeklong recordings and **two visits** to Vanderbilt.

To be eligible, you must have a child that is 12 months or younger

Participating families will receive up to \$415 for full participation



Scan me!



Seeking Families to Participate in a Research Study



We're studying family interactions in their every day lives and need your help. Participation includes weeklong recordings and **two visits** to Vanderbilt.

To be eligible, you must have a child that is 12 months or younger

Participating families will receive up to \$415 for full participation



Scan me!



Seeking Families to Participate in a Research Study



We're studying family interactions in their every day lives and need your help. Participation includes weeklong recordings and **two visits** to Vanderbilt.

To be eligible, you must have a child that is 12 months or younger

Participating families will receive up to \$415 for full participation



Scan me!



Seeking Families to Participate in a Research Study



We're studying family interactions in their every day lives and need your help. Participation includes weeklong recordings and **two visits** to Vanderbilt.

To be eligible, you must have a child that is 12 months or younger

Participating families will receive up to \$415 for full participation



Scan me!



Seeking Families to Participate in a Research Study



We're studying family interactions in their every day lives and need your help. Participation includes weeklong recordings and **two visits** to Vanderbilt.

To be eligible, you must have a child that is 12 months or younger

Participating families will receive up to \$415 for full participation



Scan me!



Seeking Families to Participate in a Research Study



We're studying family interactions in their every day lives and need your help. Participation includes weeklong recordings and **two visits** to Vanderbilt.

To be eligible, you must have a child that is 12 months or younger

Participating families will receive up to \$415 for full participation



Scan me!



Seeking Families to Participate in a Research Study



We're studying family interactions in their every day lives and need your help. Participation includes weeklong recordings and **two visits** to Vanderbilt.

To be eligible, you must have a child that is 12 months or younger

Participating families will receive up to \$415 for full participation



Scan me!



Seeking Families to Participate in a Research Study



We're studying family interactions in their every day lives and need your help. Participation includes weeklong recordings and **two visits** to Vanderbilt.

To be eligible, you must have a child that is 12 months or younger

Participating families will receive up to \$415 for full participation



Scan me!



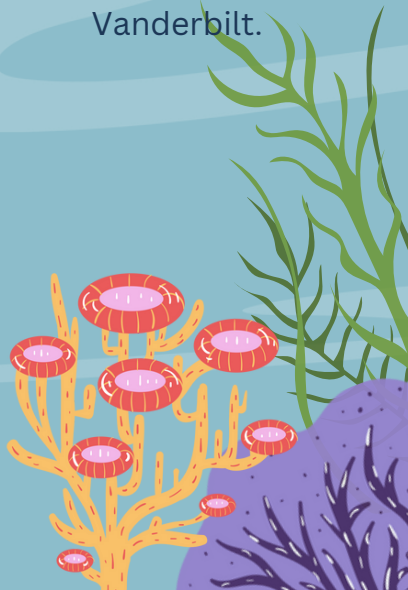
Seeking Families to Participate in a Research Study



We're studying family interactions in their every day lives and need your help. Participation includes weeklong recordings and **two visits** to Vanderbilt.

To be eligible, you must have a child that is 12 months or younger

Participating families will receive up to \$415 for full participation



Scan me!



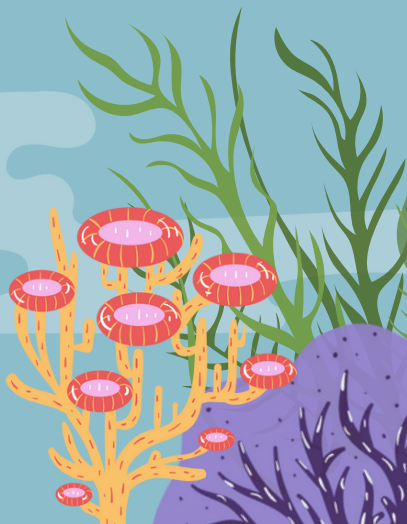
Seeking Families to Participate in a Research Study



We're studying family interactions in their every day lives and need your help. Participation includes weeklong recordings and **two visits** to Vanderbilt.

To be eligible, you must have a child that is 12 months or younger

Participating families will receive up to \$415 for full participation



Scan me!



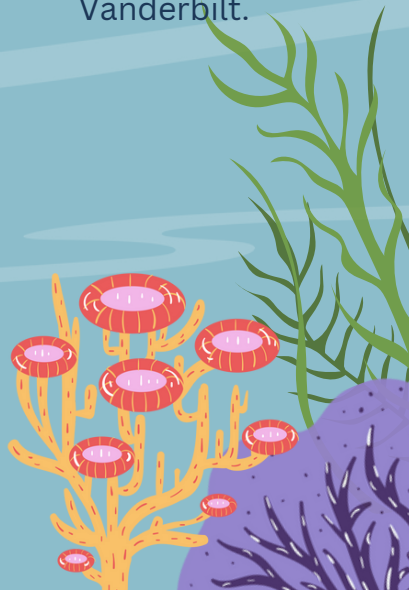
Seeking Families to Participate in a Research Study



We're studying family interactions in their every day lives and need your help. Participation includes weeklong recordings and **two visits** to Vanderbilt.

To be eligible, you must have a child that is 12 months or younger

Participating families will receive up to \$415 for full participation



Scan me!



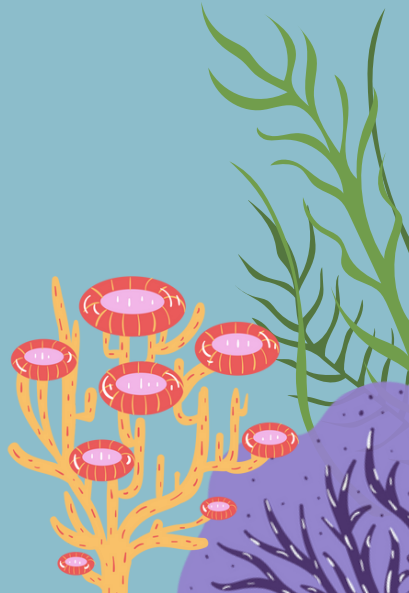
Seeking Families to Participate in a Research Study



We're studying family interactions in their every day lives and need your help. Participation includes weeklong recordings and **two visits** to Vanderbilt.

To be eligible, you must have a child that is 12 months or younger

Participating families will receive up to \$415 for full participation



Scan me!



Seeking Families to Participate in a Research Study



We're studying family interactions in their every day lives and need your help. Participation includes weeklong recordings and **two visits** to Vanderbilt.

To be eligible, you must have a child that is 12 months or younger

Participating families will receive up to \$415 for full participation

