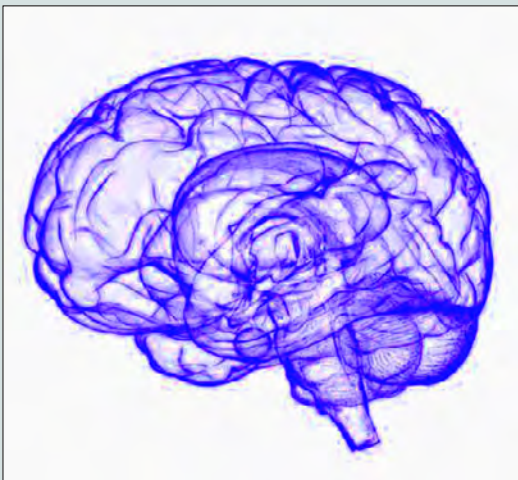




## HOW DO WE STUDY THE BRAIN?


- We play interactive computer games while taking pictures of the brain.
- Pictures are taken using a Magnetic Resonance Imaging (MRI) machine.
- We use the MRI to measure patterns of brain activity.
- The MRI is a safe, non-invasive and widely used tool, and it is often utilized in clinical practice.



## CONTACT US!

 (615) 875-1667

 BrainDevelopmentLaboratory@gmail.com

 lab.vanderbilt.edu/BoothLab/

 facebook.com/BoothLab

*Principal Investigator: James R. Booth, Ph.D.  
Peabody College of Education and  
Human Development, Vanderbilt University*

*Graphic services supported in part by  
EKS NICHD Grant 1P50HD103537-01 to the  
Vanderbilt Kennedy Center, vkc.vumc.org.*

Institutional Review Board



Date of IRB Approval: 10/24/2022

## Deaf and Hard of Hearing Reading Project

Help us discover how children who are d/Deaf and hard of hearing learn to read!



BRAIN  
DEVELOPMENT LAB





## DEAF AND HARD OF HEARING READING PROJECT

### WHAT WE DO

Study how DHH children's brains develop and how they change when learning written language!

## WHY PARTICIPATE?

- Participants will be paid  
*(including travel expenses for those who must drive far or fly to Nashville)*
- Receive your child's standardized test scores
- Help unravel the mystery behind how d/Deaf and hard of hearing children learn to read



## WHO CAN PARTICIPATE?

- 10-17 year olds who are d/Deaf, hard of hearing, or hearing
- Use of English, American Sign Language, or both to communicate
- Use of most assistive hearing devices or no device at all

Institutional Review Board



Date of IRB Approval: 10/24/2022

## WHAT TO EXPECT

Children will be asked to participate in multiple sessions including:

- Multiple sessions
- Playing interactive learning games
- Standardized testing
- Experience a mock MRI & a real MRI *(Magnetic Resonance Imaging is safe and non-invasive)*

*Testing can take place during the day, after school, or on weekends at Vanderbilt University.*

