

Checklist for Autism Spectrum Disorder using DSM-5 & ASD-PEDS

A diagnosis of Autism Spectrum Disorder is based on: (1) **differences in social communication and interaction** (in all 3 areas on the left side) and (2) **repetitive behaviors, interests, and activities** (in at least 2 areas on the right side).

Observations from the ASD-PEDS fit into DSM-5 criteria as shown below (see bullets) and should be combined with history and caregiver report, especially where noted in *italics*.

Differences in Social Communication & Interaction

Social Language & Back-and-Forth

- Social speech and sounds
- Frequent and flexible eye contact
- Interaction during activities (e.g., requesting, directing attention, sharing enjoyment)



Nonverbal Communication

- Frequent and flexible eye contact
- Use of gestures and integration with eye contact and speech/vocalization



Social Interest & Shared Play

- Interaction during activities (e.g., requesting, directing attention, sharing enjoyment)

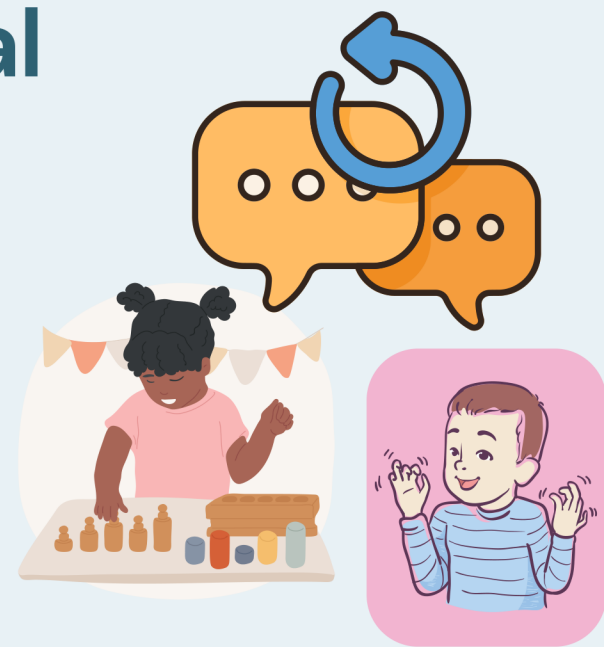
Also ask caregivers about the child's social interest, interactions, and relationships with kids their age and other people.



Repetitive Behaviors, Interests, & Activities

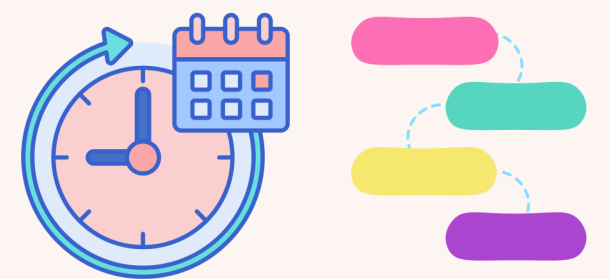
Repetitive/Unusual Behaviors

- Unusual vocalizations
- Unusual or repetitive play
- Unusual or repetitive body movements



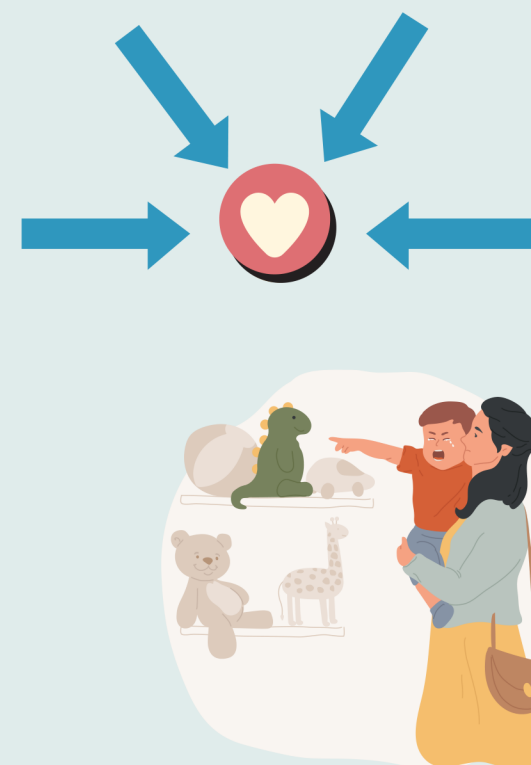
Security in Sameness and Routines

Ask caregivers about specific routines/rituals, needing things to stay the same/a certain way, and difficulty with changes and transitions.



Focused Special Interests

- Unusual or repetitive play (including strong focus on certain toys, routines, or activities and difficulty shifting child's attention to something new)



Sensory Differences

- Unusual sensory exploration or reaction

