





Visual Supports and Autism Spectrum Disorders
Treatment and Research Institute for Autism Spectrum Disorders
Vanderbilt Kennedy Center



© 2021 Tennessee Department of Education

1



FOR ALL
We will set all students on a path to success.


ACADEMICS
ALL TENNESSEE STUDENTS WILL HAVE ACCESS TO A HIGH-QUALITY EDUCATION, NO MATTER WHERE THEY LIVE

STUDENT READINESS
TENNESSEE PUBLIC SCHOOLS WILL BE EQUIPPED TO SERVE THE ACADEMIC AND NON-ACADEMIC NEEDS OF ALL STUDENTS IN THEIR CAREER PATHWAYS

EDUCATORS
TENNESSEE WILL SET A NEW PATH FOR THE EDUCATION PROFESSION AND BE THE TOP STATE TO BECOME AND REMAIN A TEACHER AND LEADER FOR ALL

2

What Are Visual Supports?



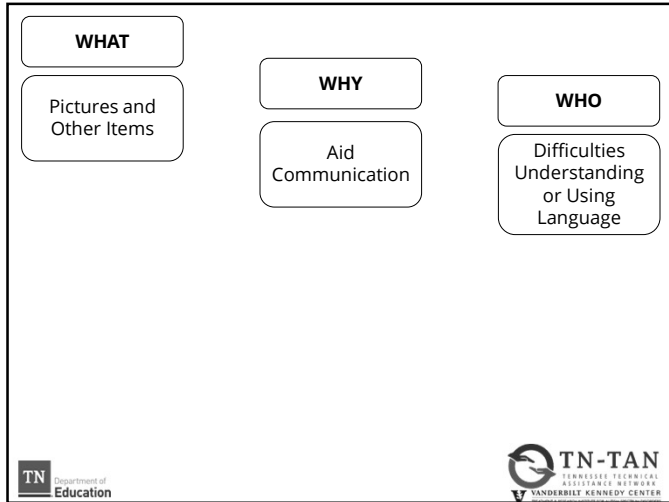
© 2021 Tennessee Department of Education

3

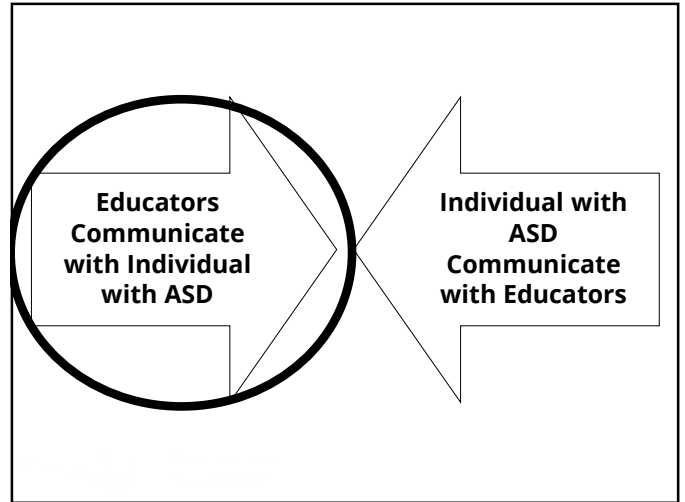
Objectives

- Define visual supports
- Explain why visuals are effective for students with ASD
- Describe three types of visual supports:
 - First/Then Boards
 - Visual Schedules
 - Visual Parameters
- Discuss how TRIAD can help you embed visual supports within your setting

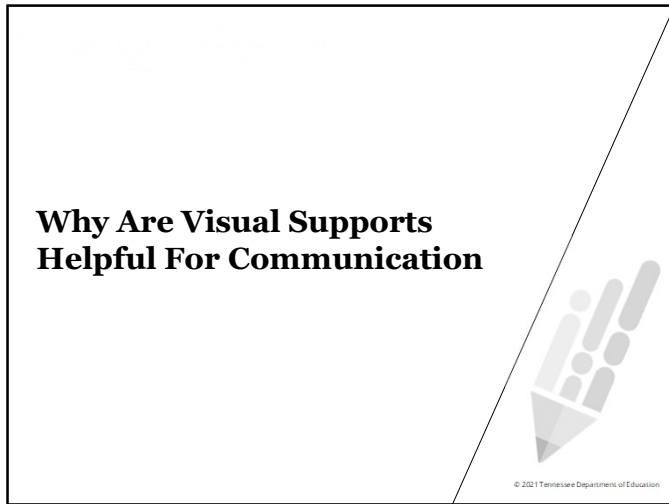
4



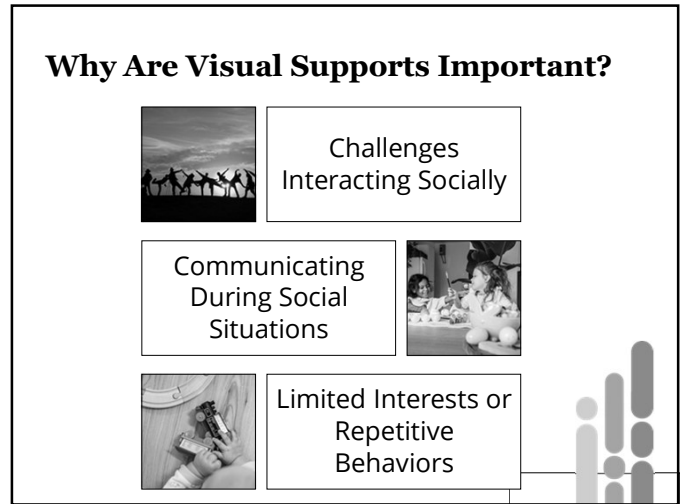
5



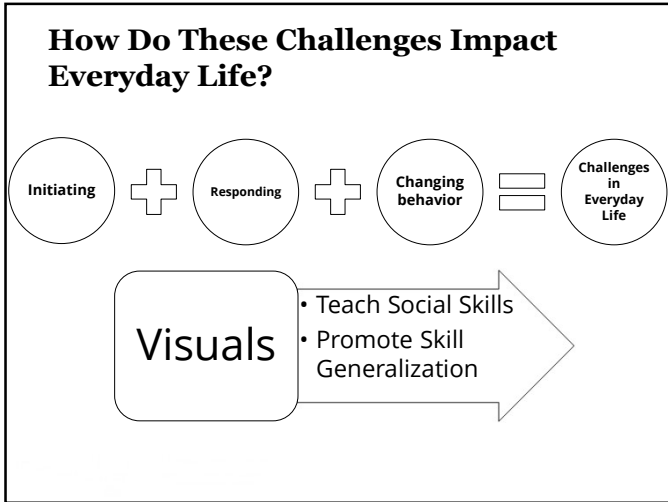
6



7



8



9

How Do These Challenges Impact Everyday Life?

- Understanding or following spoken directions
- Expressing needs or wants

TN-TAN
TENNESSEE TECHNICAL ASSISTANCE NETWORK

VANDERBILT KENNEDY CENTER
Treatment and Research Institute for Autism Spectrum Disorders

10

When Routines Change or When Situations are Unfamiliar

What's Next

Important Details

Coping

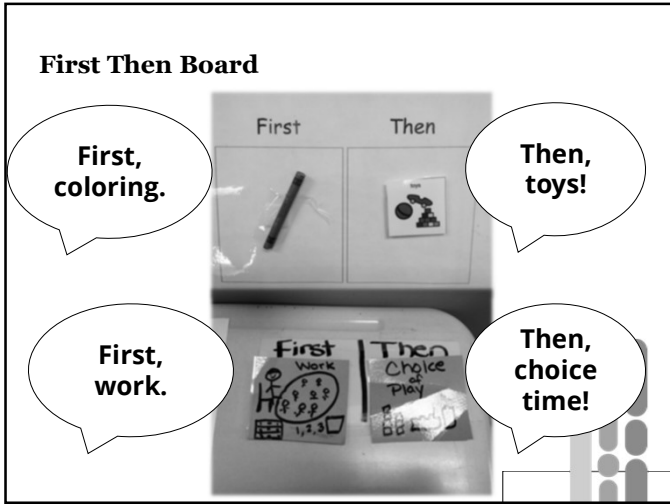
11

Types of Visual Supports

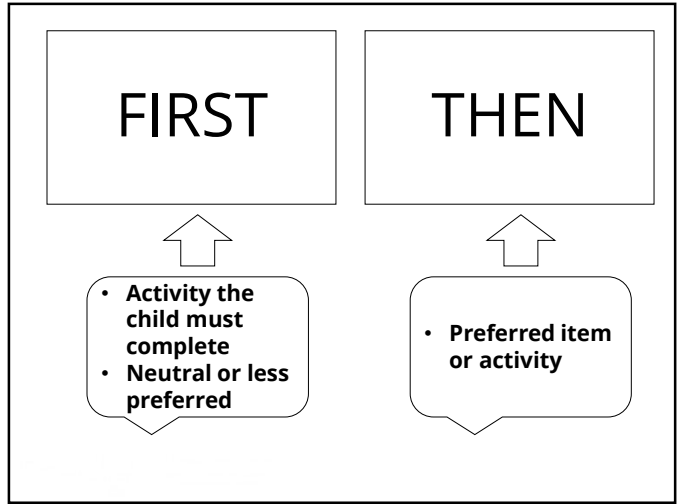
- First-Then Board
- Visual Schedule
- Visually Setting Parameters

© 2011 Tennessee Department of Education

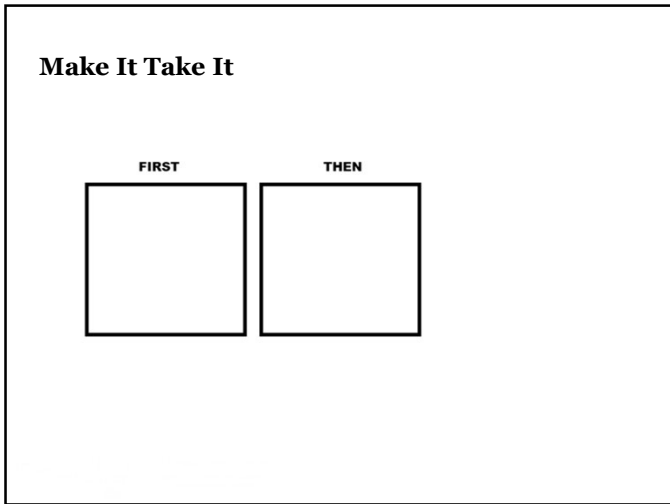
12



13



14



15

Visual Schedules

Time	Activity
9:15*	exercise *
9:30	* group *
9:50	* teacher-math*
10:10	* workshop *
10:30	* writing *
10:50	* teacher-reading*
11:10	*
11:55	* lunch *
12:30	* outside *
1:00	*
2:00	* afternoon group *

Class Schedule





- 8:00 Class Begins
- 8:15 Reading
- 9:15 Spelling
- 9:45 Morning Break
- 10:00 Math
- 11:00 Lunch/Recess
- 12:00 Science
- 1:00 Social Studies
- 2:00 Midweek Break
- 2:15 Art
- 3:00 Class Ends

TN-TAN
Tennessee Autism Network
ASSISTIVE TECHNOLOGY

VANDERBILT KENNEDY CENTER
Treatment and Research Institute for
Autism Spectrum Disorders

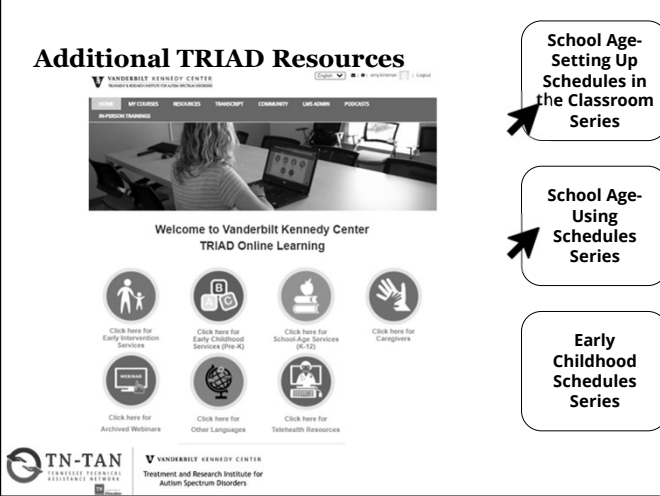
16

Make It Take It

-  Specials
-  Break
-  Lunch
-  Math

17

Additional TRIAD Resources



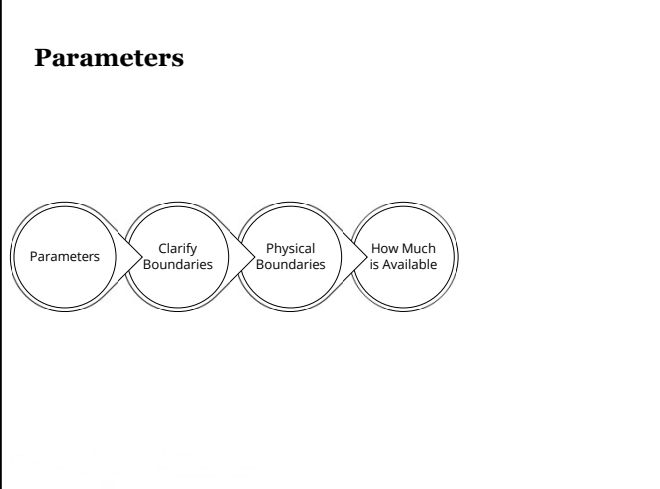
[Click here for Early Intervention Services](#)
[Click here for Early Childhood Services \(Pre-K\)](#)
[Click here for School-Age Services \(K-12\)](#)
[Click here for Caregivers](#)

[Click here for Archived Webinars](#)
[Click here for Other Languages](#)
[Click here for Telehealth Resources](#)

School Age-Setting Up Schedules in the Classroom Series
School Age-Using Schedules Series
Early Childhood Schedules Series

18

Parameters

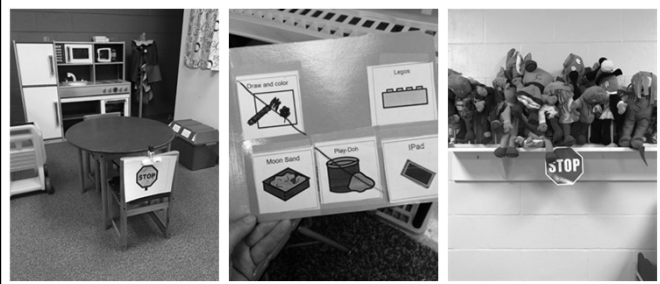


```

    graph LR
      A((Parameters)) --> B((Clarify Boundaries))
      B --> C((Physical Boundaries))
      C --> D((How Much is Available))
  
```

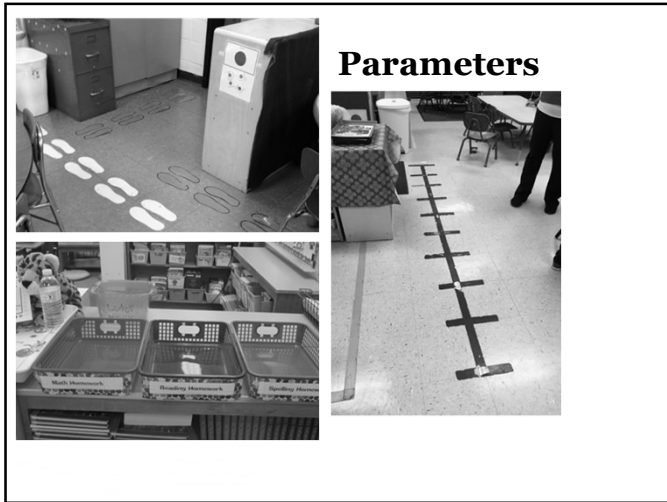
19

Parameters



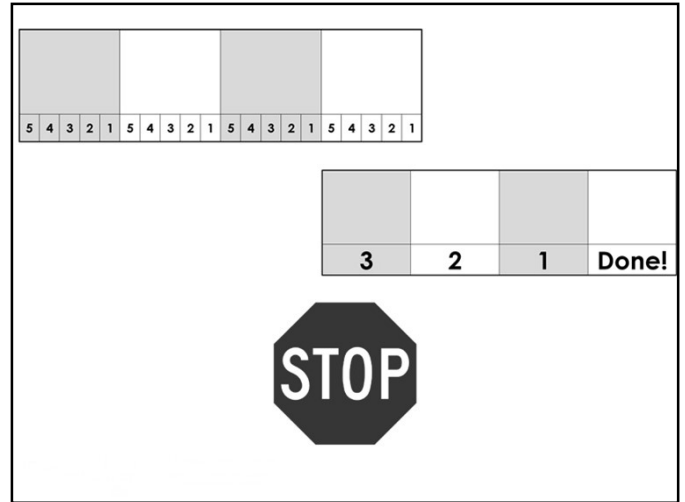
Parameters

20

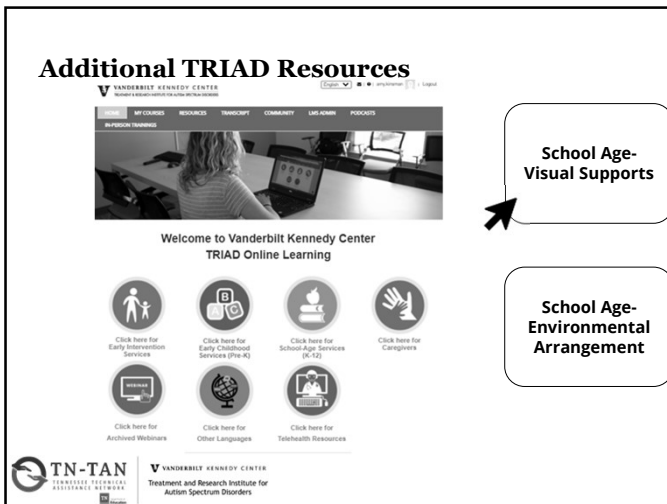


Parameters

21



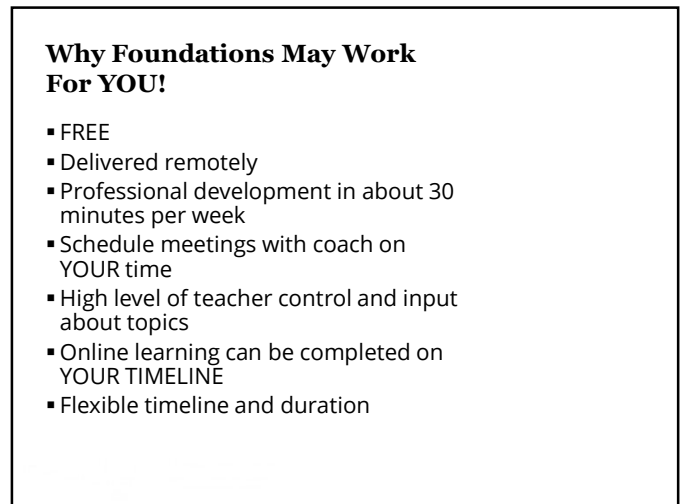
22



School Age-Visual Supports

School Age-Environmental Arrangement

23



Why Foundations May Work For YOU!

- FREE
- Delivered remotely
- Professional development in about 30 minutes per week
- Schedule meetings with coach on YOUR time
- High level of teacher control and input about topics
- Online learning can be completed on YOUR TIMELINE
- Flexible timeline and duration

24

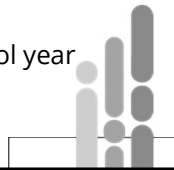
Key Components of Foundations Strategy Coaching

Key Components

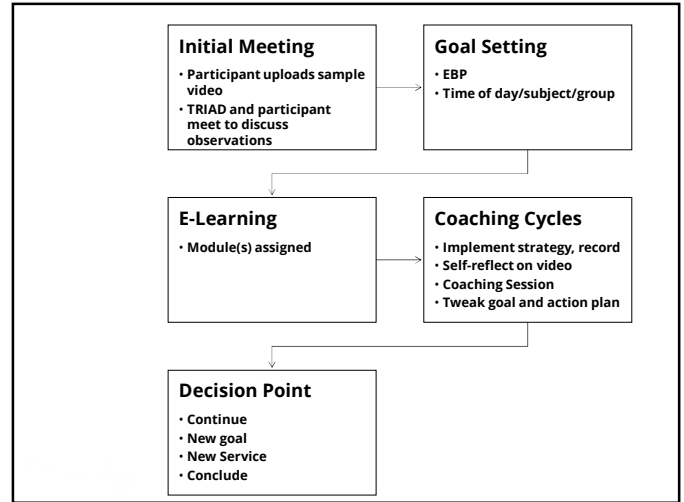
- Online coaching
- Viewing online modules about EBPs independently
- Video Self-Reflection

Timeline

- Minimum of 8 weeks
- Maximum of remainder of the school year



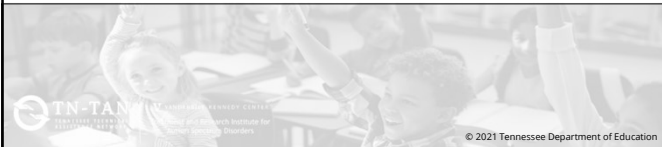
25



26

Thank You!

- Email for more information about Foundations: amy.kinsman@vumc.org
- Online Learning Portal: www.vkclearning.org
- Find out more about additional professional development opportunities: <https://vkc.vumc.org/vkc/triad/programs/>



27



VANDERBILT KENNEDY CENTER
Treatment and Research Institute for
Autism Spectrum Disorders

First

Then

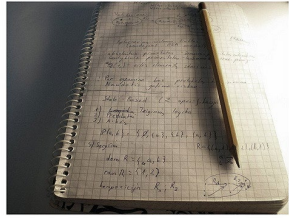


V VANDERBILT KENNEDY CENTER
Treatment and Research Institute for
Autism Spectrum Disorders



5	4	3	2	1	5	4	3	2	1	5	4	3	2	1	5	4	3	2	1

3					2					1					Done!				



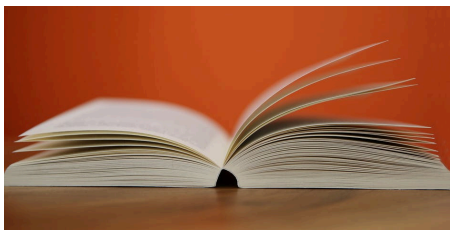
Morning Work



Breakfast



Calendar



Reading



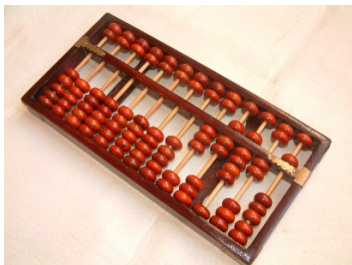
Specials



Break



Lunch



Math



Science



Social Studies



Intervention



Independent Work



Recess



Snack



Schedule Change



Pack Up