

What to expect at your research visit to the EEG Lab



VANDERBILT KENNEDY CENTER

Welcome to the Kennedy Center!
You will park in a reserved spot next to the building.



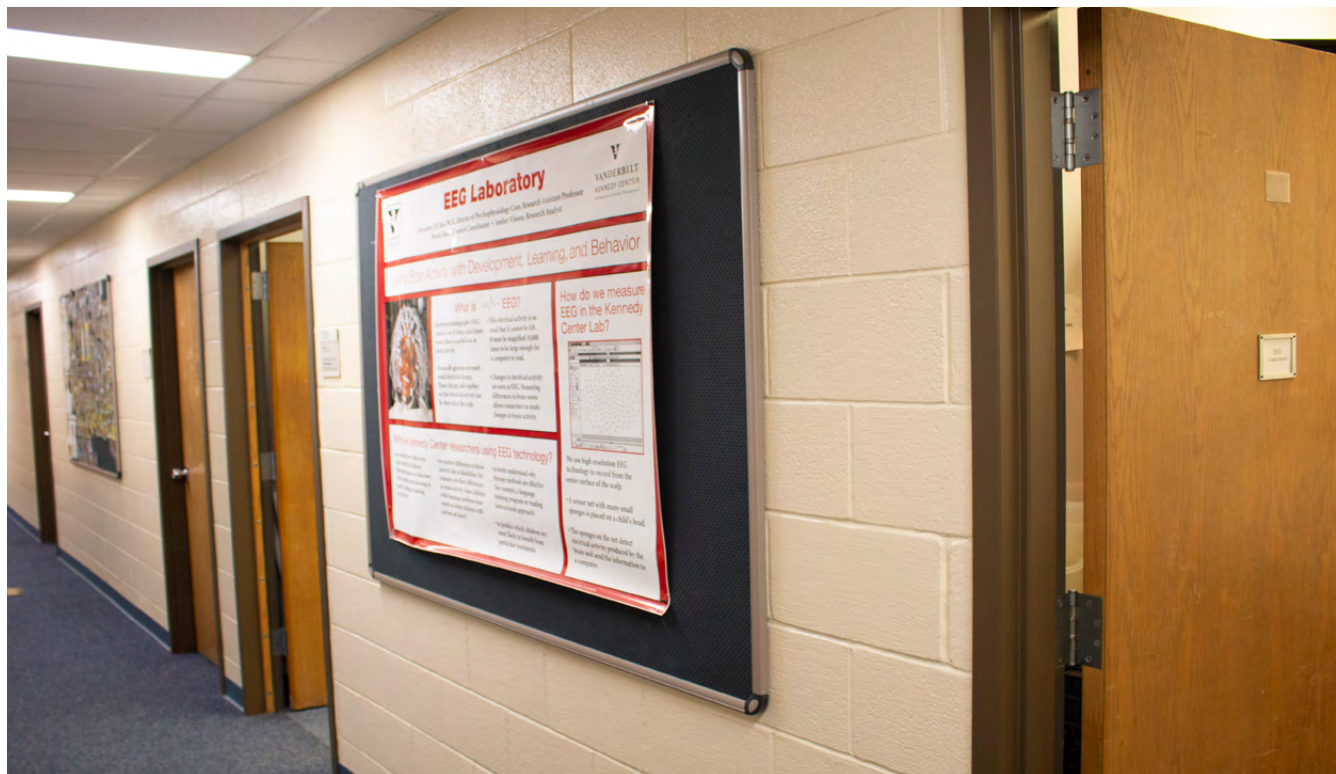
Our lab is on the main floor, behind the double doors.



You and your family will need to wear a mask
while you are in the building.



Welcome to the lab! Children and adults of all ages visit our lab to help scientists with their research.



The researchers are also wearing masks! They will wear gloves and face shields, too. This will help everyone stay healthy.



During the visit, you will sit in a chair and wear an EEG “hat”.
It has soft spongy sensors that detect brain waves.
Your family member can stay in the room with you.



A researcher will measure your head size to make sure the “hat” fits just right.



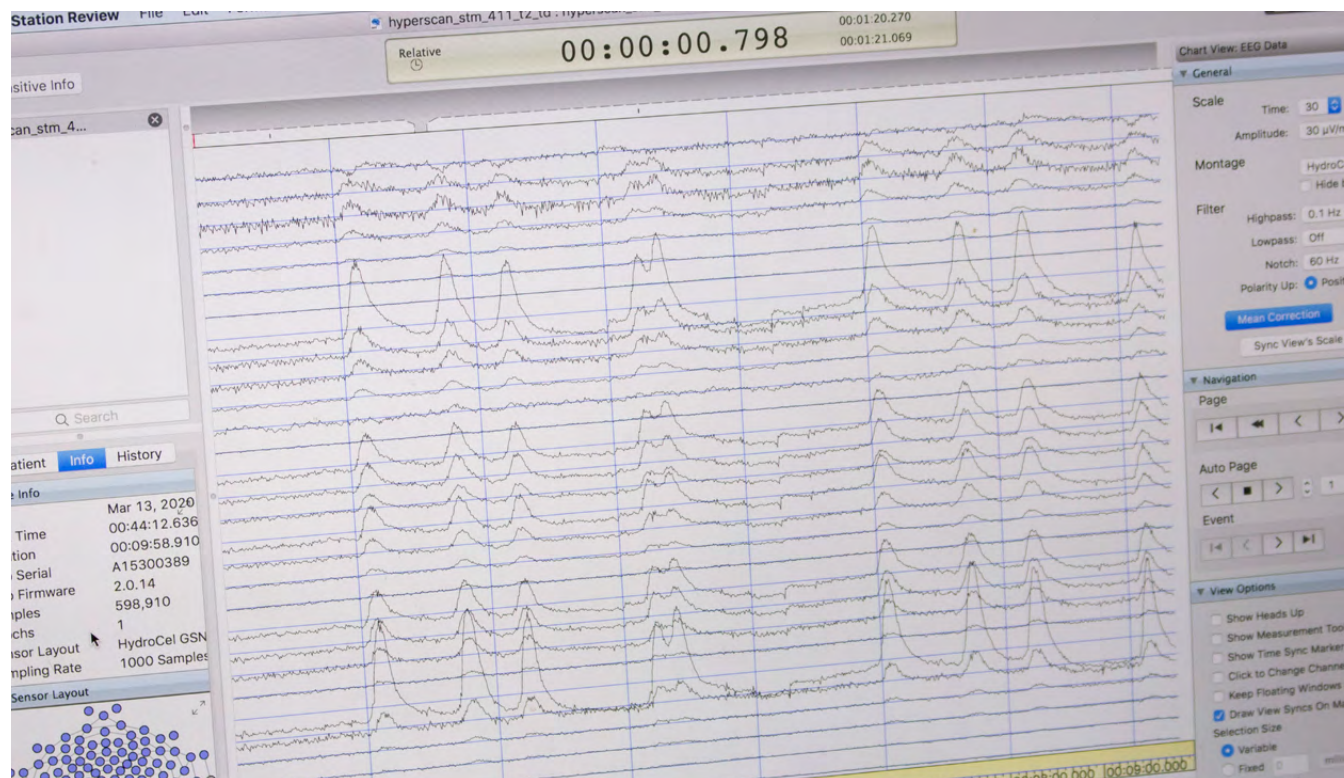
The “hat” is soaked in warm water to make it extra soft and comfortable. A researcher will place a towel on your shoulders in case the “hat” drips.



It's time to wear the Special Hat! A researcher will gently place the "hat" on your head. It will take only a minute or two. You can watch cartoons while we make sure each sensor is in the right place.



The “hat” is now ready to measure your brain waves.



All you have to do is sit and listen to the sounds and/or look at pictures on the computer. We may ask you to push some buttons or answer some questions.



When you are done, a researcher will take the hat off.
Your hair may be a little wet.
You can use the towel or a hair dryer to dry it.



ALL DONE!

Thank you for visiting
the EEG Lab!



Valuavitaly, Freepik.com